



## Division of Comparative Endocrinology

### *In this newsletter*

- [Message from the Chair](#)
- [Message from the Program Officer](#)
- [Message from the Secretary](#)
- [Message from the Student/PostDoc Representative](#)
- [Business Meeting Minutes](#)
- [Elections](#)

### DCE Officers & Representatives

**Stephen McCormick**  
Chair 2012-2014

**Mary Mendonca**  
Chair-Elect 2012-2014

**Erica Crespi**  
Secretary 2011-2013

**Ignacio Moore**  
Program Officer 2012-2014

**Rebecca Calisi**  
Student/Postdoc Representative 2010-20123

**Robert John Denver**  
ICB Editorial Board Representative 2008-2013

### Message from the Chair

*Stephen McCormick*

It is a pleasure and an honor to serve as your new Chair of the Division of Comparative Endocrinology in SICB. For those who don't know me already, I am a USGS scientist at the Conte Anadromous Fish Research Center and an adjunct professor at the University of Massachusetts, Amherst. Most of my research has focused on the hormonal control of osmoregulation and the preparatory changes of anadromous fish for migration and seawater entry. I've been an SICB member for 29 years, and have found that the Society and the Division have been important resources for my career development and those of my students and post-docs. I hope to use my time as the Chair of DCE to strengthen the Division and make it a better place to communicate science and to move you forward in your careers.

But how is that goal accomplished? Having more of us and increasing our participation within the society will help. The annual meeting is the focal point of many of our activities and a good place to start. I will work with Ignacio Moore, our new Program Officer, to increase the number, content and visibility of our symposia. I'd also like to encourage everyone to find ways for us to communicate in less formal, more personal ways. We have a DCE social at every meeting, and it's a great way to meet others with similar interests. Because there are only limited opportunities like this at the meeting, please take advantage to reach out to those you haven't met.

In addition to our annual meeting, I would like to find other ways for us to share ideas. Erica Crespi and Rebecca Calisi-Rodríguez have set up a Facebook group for DCE, and I encourage all of you to join and use it. "Oldtimers" like me and John Wingfield (sorry John!) are already signed up, so no excuses!



If you want to join our Facebook group, go to the following web site:

<http://www.facebook.com/groups/104465249680261/>

As the saying goes, I am here to serve; so more than anything I would like to hear your thoughts for improving what the Division can do for you and for Comparative Endocrinology. Please contact



me at [mccormick@umext.umass.edu](mailto:mccormick@umext.umass.edu) with your ideas.

Here are a few more items of note:

Thanks to Mark Sheridan for his excellent tenure as DCE Chair, and for helping me make the transition as your new chair.

As many of you already know, Howard Bern passed away on the day before this year's meeting. I had the pleasure of being a postdoc in Howard's lab, and he was truly a remarkable man. Mark Sheridan, Gordon Grau and I have written a short piece on Howard [elsewhere in this newsletter](#) and a remembrance will soon appear in *General and Comparative Endocrinology*. We are planning a special session in San Francisco honoring Howard.

With Howard's passing, the Bern lecture was especially bittersweet this year. Thanks to Lynn Riddiford for a tour de force of insect endocrinology and integrative biology.



Former DCE Chair Mark Sheridan and Lynn Riddiford, the 2012 Bern Lecturer, took a second to pose before her presentation at the Charleston meeting.



DCE officers congratulated Lynn Riddiford at the Bern Lecture Reception. (l-r) Erica Crespi, Mark Sheridan, Riddiford, Rosemary Knapp, Ignacio Moore, and Steve McCormick.

The meeting in Charleston was the biggest in SICB history! DCE was well represented (185 presentations total), and it was great to see so many of you there. The quality of the student talks and posters was incredible. **Rosemary Knapp** was our program officer for the Charleston meeting, and hats off to her for a job well done.

Congratulations to Christine Madliger, winner of the Aubrey Gorbman award for best student oral presentation, and Brittany Whitley, winner of the *first* Lynn Riddiford best student poster award (see below). Thanks to all the judges and **Joe Casto** as the judge-in-chief.

Congratulations to **Molly Dickens**, who is currently an NSF International Post-Doctoral Research Fellow at the University



Molly Dickens

of Liege, for winning the 2012 Dorothy M. Skinner Scholarship Award. This award was established to celebrate the outstanding accomplishments of early-career women from any division within SICB, and it provides funds to help pay for travel to the SICB meeting. Molly is added to a long line of DCE members who have won this award since its inception in 2008, including Rebecca Calisi-Rodríguez (2011), Maren Vitousek (2010), and Deborah Lutterschmidt (2008). Congratulations to all of these women who to our members who continue to promote the breakdown of barriers to women in the sciences.

The San Francisco meeting will be downtown and affordable, and is likely to be even bigger and better than Charleston. Please see Ignacio Moore's update on the San Fran meeting in the following pages.

The deadline for nominations for the Bern lecturer for the San Francisco meeting is **June 15, 2012**. Please contact me for information on the nomination process.

The endowment for the Bern Lecture is in need of additional funds in order to be self-supporting. If you have already donated to this fund, thank you! Anyone interested in making a contribution, you can do so by:

Go to the on-line web site:  
<https://ssl4.westserver.net/birenheide/secure/sicb/cart/donations.php>

By sending a check to:

SICB  
1313 Dolley Madison Blvd.  
Suite 402  
McLean VA 22101  
(be sure to write "Bern Fund" on the

memo line)

Hope to see you all in San Francisco!

## Message from the Program Officer

*Ignacio Moore*

I hope that everyone enjoyed the Charleston, SC meeting. The weather was beautiful and we enjoyed a full complement of southern hospitality. This was the largest SICB conference ever and bodes well for the future.

Dr. Lynn Riddiford's Howard Bern lecture was a wonderful overview of her decades of research on insect endocrinology. She told us a fascinating story. She further entertained a group of us at dinner describing her position as the first female assistant professor of biology at Harvard and how she was not allowed admittance into the dining hall of the faculty club as it was men only. Thank goodness that times have changed!

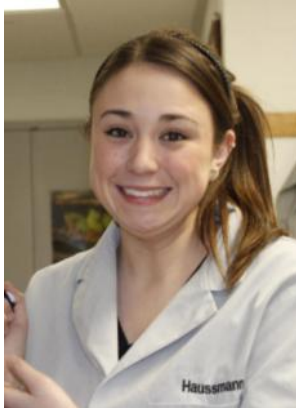
## Congratulations to the winners of the DCE Student Presentation Awards:

SICB members identifying themselves as belonging to DCE submitted 87 abstracts at the Charleston meeting, including 48 from students competing in our best student presentation competitions. The 2012 winners were:

**Christine Madliger**  
(University of Windsor, Ontario Canada) won the Aubrey Gorbman Oral Presentation Award for "An investigation of the CORT-fitness



Christine Madliger



Brittney Whitley  
ence.

hypothesis: the importance of age and environmental quality."

**Brittney Whitley** (Bucknell University) won the inaugural Lynn Riddiford Poster Presentation Award for "Chronic stress alters stress-induced oxidative damage in domestic chickens (*Gallus gallus*)." These were just two of the dozens of fantastic student presentations at the conference.

Many thanks to **Joe Casto** for organizing the judging of student presentations. Joe does an amazing job and he deserves all our appreciation. In addition, thanks also to all the individuals who take the time to judge student presentations.

Please join me in thanking **Rosemary Knapp** for her service as our Division Program Officer the past two years. She has done a remarkable job that I will make every effort to emulate.

I'm already looking forward to the San Francisco conference next January. Abstract and registration details will be emailed and posted online this summer. DCE will be co-sponsoring the symposia:

*Ecological Epigenetics*

*Hormone-Mediated Sex Ratio Adjustments in Vertebrates*

*Understanding First Order Phenotypes: Transcriptomics for Emerging Model Systems*

*Coping with Uncertainty: Integrating Physiology, Behavior and Evolutionary Ecology in a Changing World*

There are three society wide symposia, including, "Phenotypic plasticity and the evolution of gender roles" and several other symposia planned that will also interest various subsets of DCE members. I encourage any who have thought about organizing a symposium to start planning for our 2014 meeting in Austin; proposals will be due late summer. Feel free to contact me should you have any questions about organizing one.

## Message from the Secretary

*Erica Crespi*

We are officially in the 21<sup>st</sup> century of communication! Thanks to help from Rebecca Calisi-Rodríguez and Lisa Belden, we have a Facebook group where DCE folks can communicate about recent papers of interest, issues in comparative endocrinology and science in general, and I will be sending information such as deadline reminders (e.g., for Bern Lecture nominees, officer voting, meeting abstract deadlines) and other news flashes from the DCE news desk. Please join the group! (see information above).



Our new logo on  
Facebook

## **Biostatistics Workshop at the Charleston SICB meeting**

After conversations at the 2011 SICB meeting, we were able to organize a biostatistics workshop at the 2012 Charleston meeting. Jesse Brunner, of Washington State university, presented "**Survival Analysis: Not just for survival anymore,**" which was attended by 44 participants. Jesse covered the basics of survival analysis and talked about how it can be applied to multiple kinds of time-dependent events (including survival). He also described and distributed R code to help jumpstart users of that statistical program. All workshop materials can be found at



the following wikpage: <http://sicb-biostatwiki.wikispaces.com/>



Anyone interested in obtaining access to this wikpage, please contact me at [erica.crespi@wsu.edu](mailto:erica.crespi@wsu.edu).

Jesse Brunner helped students conduct analyses they just learned during the Survival Analysis Workshop held during the Charleston SICB meeting.

We are planning on continuing to support these kinds of workshops since the response was so positive. Please contact me or any of the officers if you have any workshop ideas. For the 2013 San Francisco meeting, we are tentatively planning a "**Genomics for non-model organisms**" hands-on workshop, although we are receptive to new ideas about other workshops that would benefit DCE members. So far, we have two speakers lined up:

### **"A Biologist's Guide to Working with Large Sequence Datasets"**

Jodi Schwarz, Vassar College, creator of Aip-tasiaBase

### **"Methods of (free) microarray analysis"**

Matt Settles, Chief Analyst, Institute for Bioinformatics and Evolutionary Studies, University of Idaho

### **Meetings to keep on your extended calendars:**

10th International Symposium on Avian Endocrinology, Gifu, Japan. June 5-9, 2012  
<http://www.isae2012.org/>

Society for Behavioral Neuroendocrinology, Madison, WI, June 15-18, 2012. Early meeting registration deadline May 11, 2012

Endocrine Society Meeting, Houston, TX, June 23-26, 2012. Early meeting registration deadline May 1, 2012

10th International Congress on the Biology of Fish, Madison, WI, July 15-19, 2012

7th International Symposium on Fish Endocrinology, Buenos Aires, Argentina. September 3-6, 2012

17th International Congress of Comparative Endocrinology, Barcelona, Spain. July 15-19, 2013

2<sup>nd</sup> meeting of the North American Society of Comparative Endocrinology held at Universidad Nacional Autonoma de Mexico (UNAM), Campus UNAM-Juriquilla, Queretaro, Mexico, 2013 (date to be announced).

## **Message from the Graduate Student and Post-doc Representative**

*Rebecca M. Calisi-Rodríguez*

It was a great meeting in Charleston, with the largest number of presentations given by people affiliated with our Division of Comparative Endocrinology. If you are not a member of DCE, you can easily become one when you become a new member or renew your membership with SICB. It is a great and welcoming community, perfect for students and postdocs to learn, grow, and network.

### **Looking back at Charleston:**

Events targeted at supporting students and postdocs included, 1) a welcome event and orientation to help us get the most from the



meeting, 2) workshops, including mock interviews at all levels (which were very helpful - I definitely took advantage of this!), and 3) a Society-wide social honoring, well...us. Yes, SICB is famous for being a student and postdoc friendly meeting, with many opportunities for travel funding.

Once again, a big congratulations to our student and postdoc award winners this year! Christine Madliger (University of Windsor, Ontario) for the Aubrey Gorbman Award for best oral presentation, Brittany Whitley (Bucknell University) for the Lynn Riddiford Award for best poster presentation, and Molly Dickens (University of Liege, Belgium) for being awarded the Dorothy Skinner Award, which recognizes women in the early stages of their careers who have demonstrated outstanding scholarship and show high potential for continued excellence in research.

### Looking forward to San Francisco:

Rice-a-roni we are looking at yet another great meeting. You can play a role in it by sending me your ideas for workshops as soon as possible to [rmcalisi@ucdavis.edu](mailto:rmcalisi@ucdavis.edu). You can also join our new Facebook page, listed as, "SICB Division of Comparative Endocrinology," to post your ideas and keep up to date on the latest news from DCE.

Finally, it is never too early to look forward to the 2014 meeting in Austin, Texas. I encourage everyone interested to submit a symposium proposal for Austin (due date is August, 2012).

In addition to workshop ideas, please contact me with any other ideas on how to make the meetings even better.

See you in San Francisco!

### Minutes of the DCE Business Meeting 2012, Charleston, SC

[Click here for PDF file on SICB.org](#)

### 2012 Program Officer Elections: And the Nominees Are....

This year, elections will take place for Program Officer-Elect. We thank Mary Mendonça, Chair of the Nominations Committee, who collected information about the nominees for each position, and thank you to the nominees for your commitment and your willingness to contribute your time and energy to DCE. Please read over each candidate's biographical sketch and goals statement below. Elections will take place in May—look out for an email with a link to the electronic ballot.

#### Program Officer-Elect

#### Rosemary Knapp

#### Current Position:

Associate Professor and Director of Graduate Studies, Department of Zoology, University of Oklahoma

#### Education:

1984, B.S. with honors, Biology, Cook College, Rutgers University; 1987, M.S. Zoology, University of Wisconsin-Madison; 1996, Ph.D. Zoology. Arizona State University

#### Professional Experience:

1987-1990, Assistant Director of General Biology Laboratories, Barnard College, New York; 1989-1990, Research Assistant, Dept. Psychology, Barnard College; 1990-1996, Graduate Teaching and Research Associate (NIMH Individual Predoctoral Fellow, 1993-96), Arizona State University; 1996-1998, NIMH Individual Postdoctoral Fellow, Section of Neurobiol-





ogy and Behavior, Cornell University; 1998-2006, Assistant Professor, 2006-present, Associate Professor and Director of Graduate Studies, Dept. Zoology, OU; 2008-present, Editorial Board, *Hormones and Behavior*; 2010-2012, Associate Editor, *Proceedings of the Royal Society B: Biological Sciences*; since 2002, served on multiple NSF panels.

**SICB Membership and Activities:** I attended my first meeting in 1983 to present my undergraduate honors research. I have subsequently attended most meetings since 1990, as well as the Western Regional conferences. In 1999, I was a member of the SICB Task Force on Education. I have served DCE for several years as judge for best student presentation competitions and session co-chair, as a member of the Nominating Committee (2007) and as Divisional Program Officer (2010-12).

**Other Memberships:** AAAS, American Physiological Society, American Society of Ichthyologists and Herpetologists, American Society of Naturalists, Animal Behavior Society, International Society for Behavioral Ecology, Sigma Xi, Society for Behavioral Neuroendocrinology, Society for the Study of Evolution, Society for the Study of Reproduction

**Research Interests:** Behavioral endocrinology and spermatogenesis, especially the role of sex steroids and glucocorticoids in species with alternative male reproductive tactics.

**Goals Statement:** My first ASZ meeting in 1983 was a milestone for me in several ways, but perhaps most of all for exposing me to a wide range of exciting biological research under one roof. ASZ/SICB meetings were a critical contributor to my development as a scientist because of their student-friendly and integrative nature. They continue to be the meetings I try to attend every year because their value to me has remained high. I enjoyed serving DCE as Program Officer over the past couple of years. I would welcome the opportunity to work with the other DCE officers to continue the momentum DCE currently has in developing innovative symposia and other additions to the program to benefit both the

younger and not so young (like me) members of the division and SICB as a whole.

## Darren T. Lerner

**Current Position:** Assistant Researcher, Hawaii Institute of Marine Biology and Associate Director, University of Hawaii Sea Grant College Program

**Education:** B.S., Political Science/Psychology, University of Missouri-Columbia, 1992; M.S., Zoology, Oregon State University, 1998; Ph.D., Organismal and Evolutionary Biology, University of Massachusetts-Amherst, 2006.

**Professional Experience:** Assistant Researcher, Hawaii Institute of Marine Biology, University of Hawaii at Manoa, 2007-present; Associate Director, University of Hawaii Sea Grant College Program 2007-present; Graduate Faculty, Department of Molecular Biosciences and Bioengineering, University of Hawaii at Manoa 2009-present; Research Physiologist, U.S. Geological Survey, Conte Anadromous Fish Research Center, 2000-2006; Project Leader, U.S. Geological Survey, Oregon Cooperative Fish and Wildlife Research Unit, 1998-2000.

**SICB Activities:** SICB member since 2000; DCE Representative, Graduate Student- Postdoctoral Affairs Committee, Division of Comparative Endocrinology; DCE Best Student Paper Award Committee, 2007-2009

**Other Memberships:** AAAS, American Fisheries Society, Sigma Xi, Society for Behavioral Neuroendocrinology

**Research Interests:** Environmental physiology and hormonal regulation of osmoregulation





## SICB Newsletter

*Spring 2012 Issue*

tion, growth and development in vertebrates.

**Goal Statement:** My professional experience began as a student attending the annual meeting of the SICB and the interaction gained through the Society and the DCE has been invaluable to my career. It is critical that as students enter into successful professional positions that we provide the environment that I, and many others, have had the good fortune to enjoy and benefit. I look forward to working with the DCE chair and other members to assist in promoting a diverse and exciting scientific program through DCE specific symposia and workshops.